

Wireless Network Card Installation Guide

System Requirements

- One available PCI 2.0/2.1/2.2/2.3 port
- One available USB 1.1/2.0 port
- Operating Systems: Windows 2000/XP/Vista/win7/Linux/wince/MAC
- Minimum Disk Space: 2MB

Software Installation

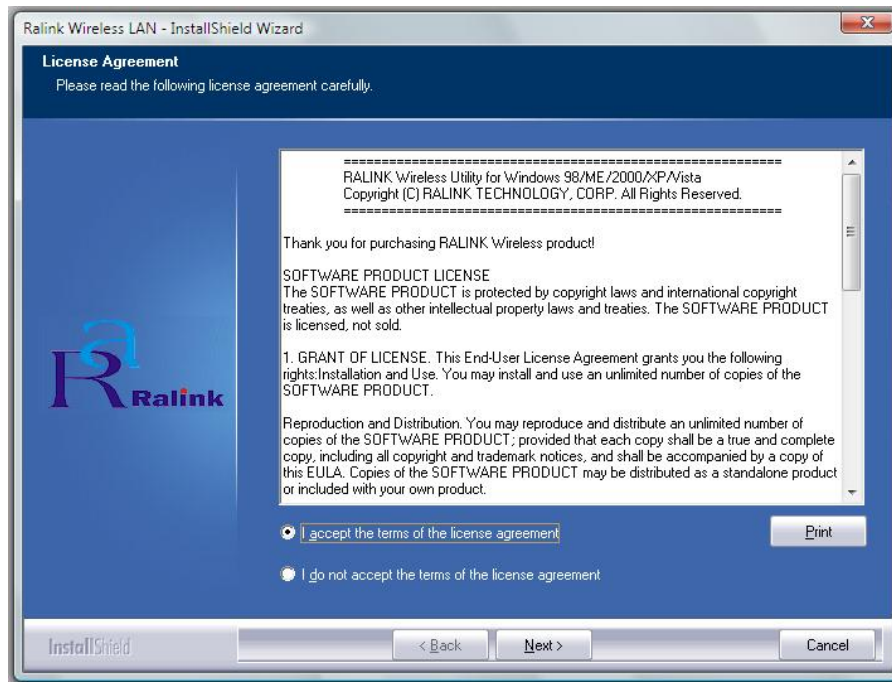
You must have the following information available before installing your Products

1. **Wireless Network Name (SSID) and,**
2. **Encryption/Network Key (if applicable)**

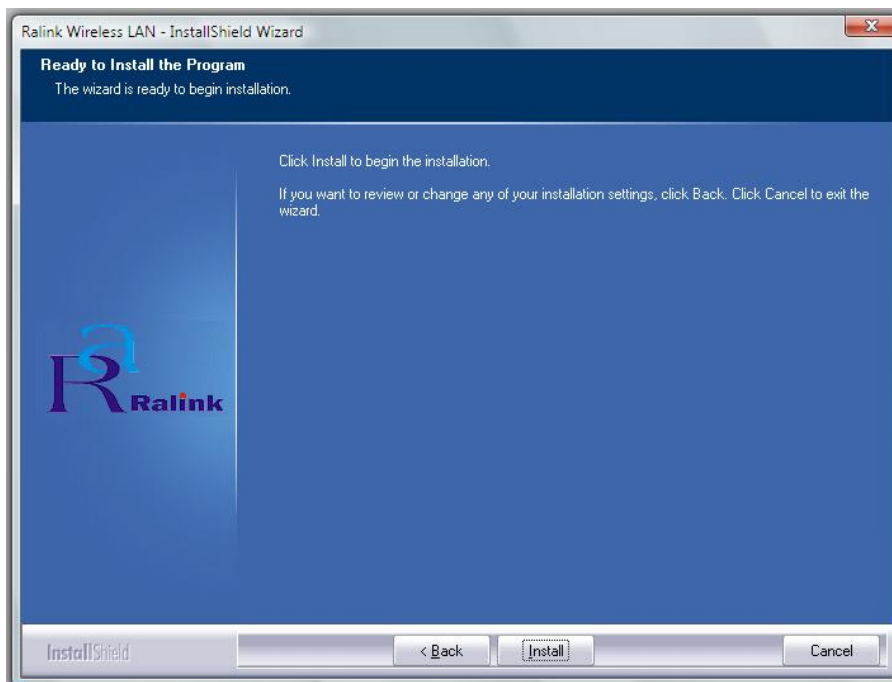
Note: Screen-shot images that shown below is based on Windows Vista. You may see different screen on other operating systems but procedures are the same.

CAUTION: Products should NOT be inserted at the beginning, you will be asked to insert after the software is completely installed.

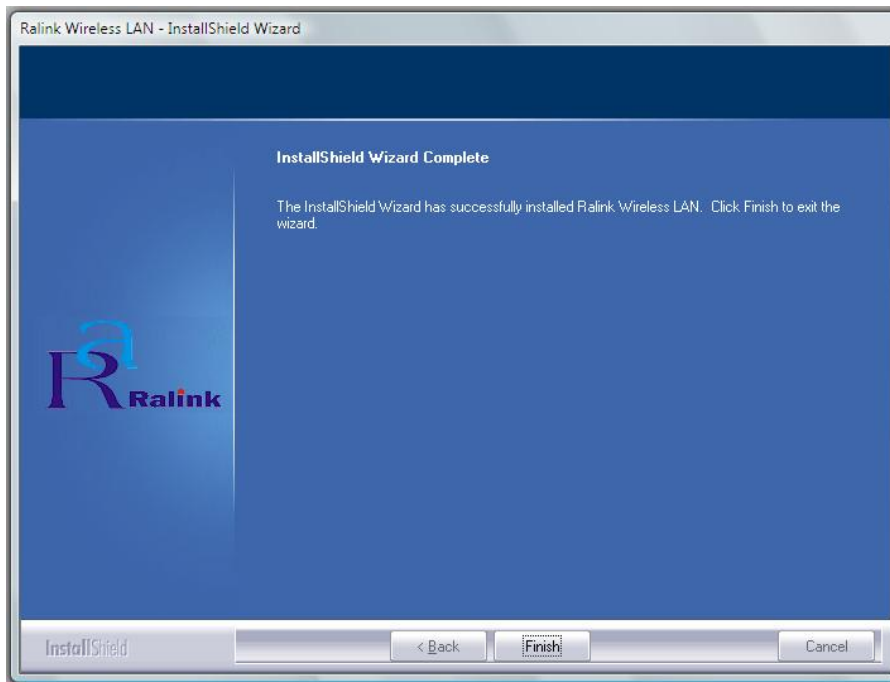
- A. Power on your computer and allow **Windows 2000 /XP/Vista/Win7/Linux/wince/MAC** to load fully.
- B. Insert the installation CD to your CD-ROM and run "**Setup.exe**" program. "Ralink Wireless LAN – InstallShield Wizard" will appear on your screen, select "**I accept the terms of the license agreement**" then click "**Next.**".



- c. Click **“Install”** to begin the installation and it will copy all necessary files to your hard disk automatically.



- d. Click **“Finish”** when you see “InstallShield Wizard Complete” to finish the installation.



You will see “Configuration & Monitor Utility” icon appears on your system tray when the installation is completed successfully. If you don’t see the icon, we highly recommended you to restart the computer. However, if you still don’t see the icon appears, please uninstall and reinstall the software again.

